

Crisis Organisation Structure



Where is each level generally located?

What is the difference in their role?

How is each level triggered?

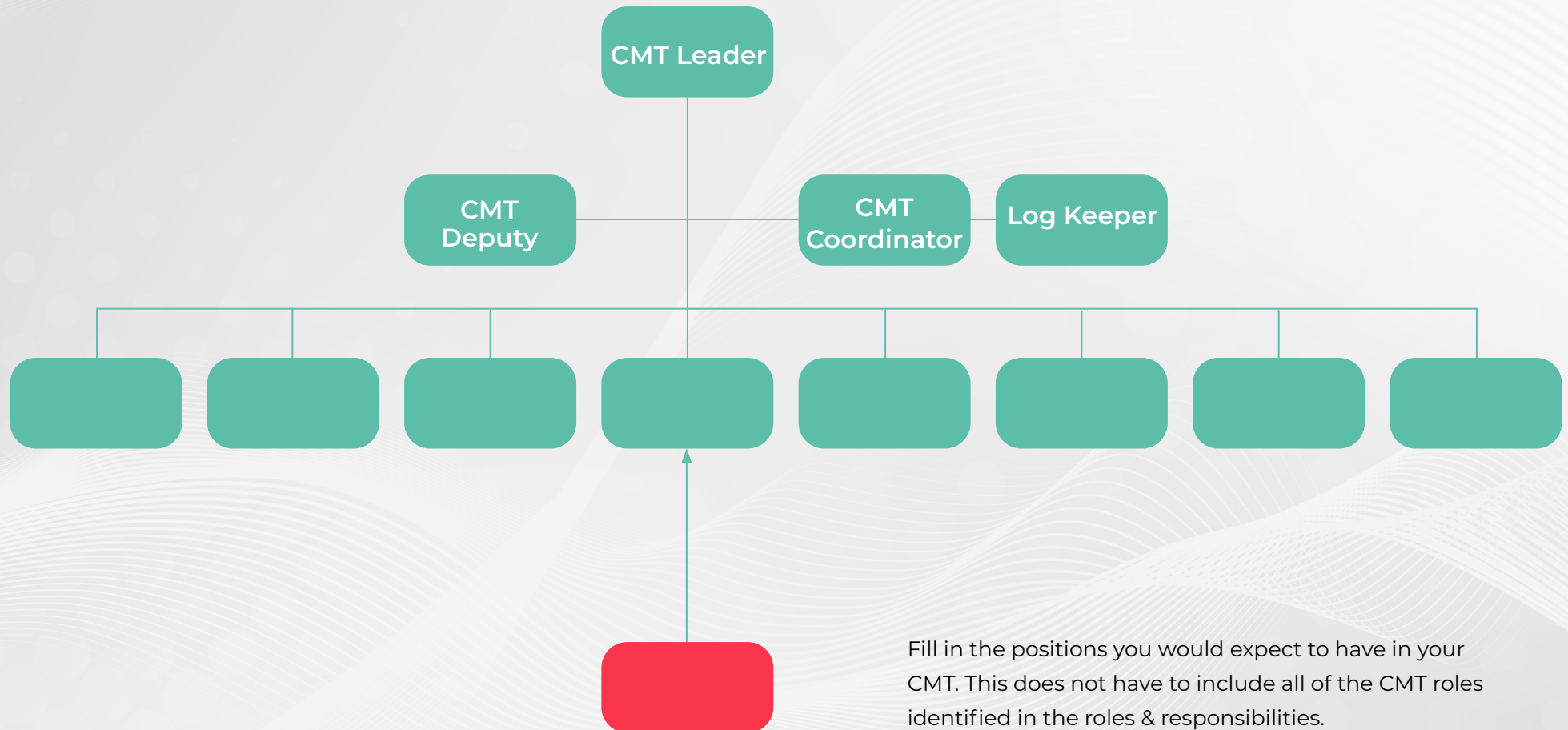
CMT Roles & Responsibilities



CMT Leader	Leads the team to assess incidents' impacts, sets team objectives and actions, manages strategic stakeholders.	Safety	Provides guidance to the Team Leader and Response Leader on safety requirements, works with Legal Leader to ensure incident reporting is completed
Deputy	Oversees the implementation of response and recovery activities. Establishes team working protocols and routines.	Legal	Provision of legal advice, oversees the reporting to regulators, assists the Safety Lead to establish incident investigation requirements.
Coordinator	Manages the preparation, setup, and coordination of resources and supports the efficient operation of the team facilities.	Finance	Manages financial and insurance impacts, conducts financial notifications, and procures/tracks funds for response and recovery efforts.
Log Keeper	Ensures all critical information and actions are captured and made available to team members.	HR	Manages the personnel impacts of the incident, provides specialist advice regarding to workforce management, leads the notification process for injured personnel.
Response	Oversees the conduct of incident response activities, coordinates additional support and works with the Business Continuity/Recovery Lead to coordinate recovery activities.	Communications	Facilitates the development of internal/external communications and stakeholder management strategies, leads the management of any media requirements.
Business Continuity/ Recovery	Manages the implementation of of business continuity activities, establishes recovery strategies, works with the Response lead to coordinate the transition from response to recovery.	Customer Engagement	Manages customer impacts; advises and supports the Leader to develop business response strategies.

Activity 4

Crisis Management Team Structure



Fill in the positions you would expect to have in your CMT. This does not have to include all of the CMT roles identified in the roles & responsibilities.